

**Specifications**

Nominal Voltage		12 V
Capacity (25°C)	10HR(10.8V)	110 Ah
	5HR(10.5V)	96.5Ah
	1HR(9.60V)	68.2Ah
Dimension	Length	281 ± 2mm (11.06inch)
	Width	267 ± 2mm (10.51inch)
	Height	207 ± 2mm (8.15inch)
	Total Height	210 ± 2mm (8.27inch)
Approx. Weight		33kg (72.8lbs) ± 4%
Terminal type		T11
Internal resistance (Fully charged, 25°C)		Approx. 4mΩ
Capacity affected by temperature (10HR)	40°C	102%
	25°C	100%
	0°C	85%
	-15°C	65%
Self-discharge (25°C)	3 month	Remaining Capacity: 91%
	6 month	Remaining Capacity: 82%
	12 month	Remaining Capacity: 65%
Nominal operating temperature		25°C ± 3°C (77°F ± 5°F)
Operating temperature range	Discharge	-15°C ~ 50°C (5°F ~ 122°F)
	Charge	-10°C ~ 50°C (14°F ~ 122°F)
	Storage	-20°C ~ 50°C (-4°F ~ 122°F)
Float charging voltage(25°C)		13.50 to 13.80V Temperature compensation: -18mV/°C
Cyclic charging voltage(25°C)		14.50 to 14.90V Temperature compensation: -30mV/°C
Maximum charging current		33A
Terminal material		Copper
Maximum discharge current		800A(5 sec.)
Designed floating life(20°C)		12 years

- ◆ Absorbent glass mat technology;
- ◆ Recognized by UL & CE;
- ◆ ABS container.

**Constant Current Discharge Characteristics (A, 25°C)**

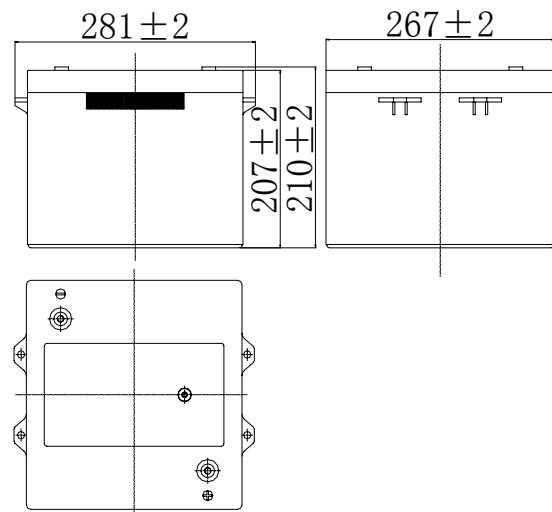
F.V/TIME	15min	30min	60min	2h	3h	4h	5h	6h	8h	10h	20h
9.60V	182	110	68.2	40.2	28.1	23.0	19.6	17.2	13.5	11.2	5.88
9.90V	177	108	67.2	40.0	27.9	22.9	19.5	17.1	13.4	11.2	5.87
10.2V	171	105	65.5	39.6	27.7	22.7	19.4	16.9	13.3	11.1	5.85
10.5V	165	102	64.2	39.0	27.5	22.6	19.3	16.8	13.2	11.0	5.82
10.8V	156	98.2	62.2	38.0	26.7	21.9	18.7	16.3	12.8	10.9	5.78

**Constant Power Discharge Characteristics (Watt, 25°C)**

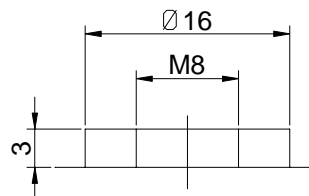
F.V/TIME	15min	30min	60min	2h	3h	4h	5h	6h	8h	10h	20h
9.60V	1993	1234	777	465	330	270	232	203	160	134	70.5
9.90V	1945	1210	766	463	328	269	231	202	159	133	70.4
10.2V	1873	1172	746	459	326	267	229	200	158	133	70.2
10.5V	1810	1144	732	452	323	265	228	199	157	131	69.8
10.8V	1714	1102	709	440	314	257	221	193	152	130	69.3

Note: The above characteristics data can be obtained within three charge/discharge cycles.

**Dimensions**

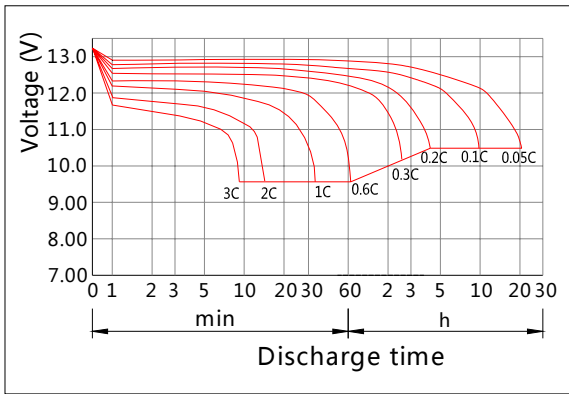


**Terminal**

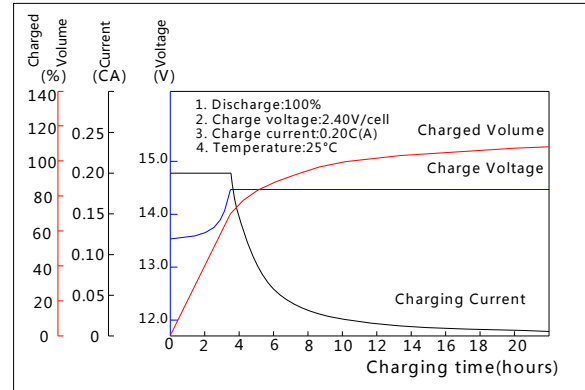


Terminal T11

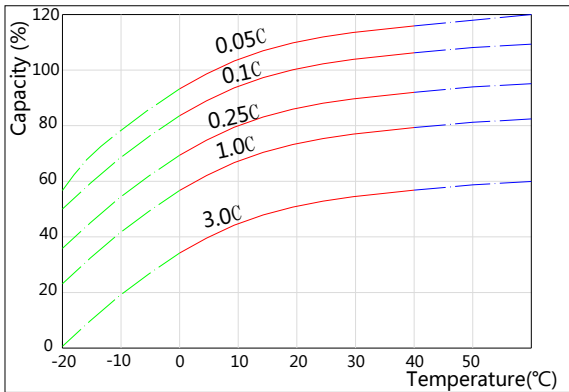
**Discharge Characteristics(25°C)**



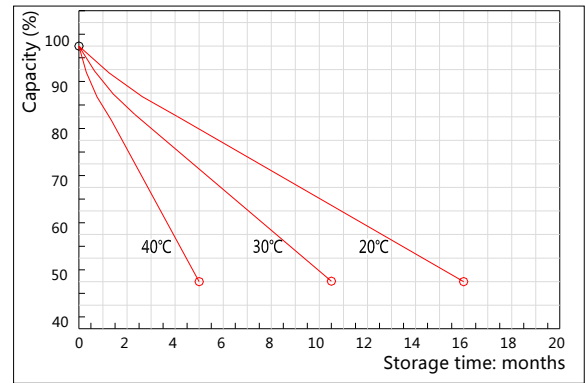
**Charging Characteristics(25°C)**



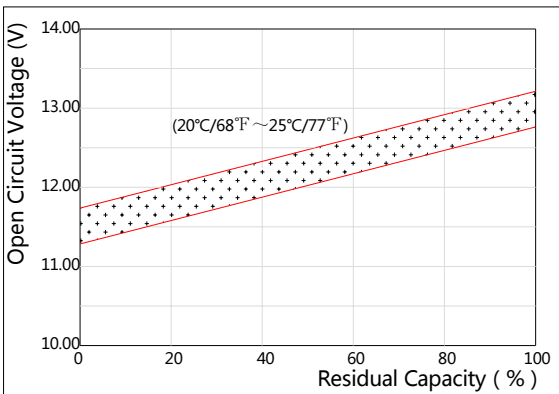
**Effect of Temperature on Capacity**



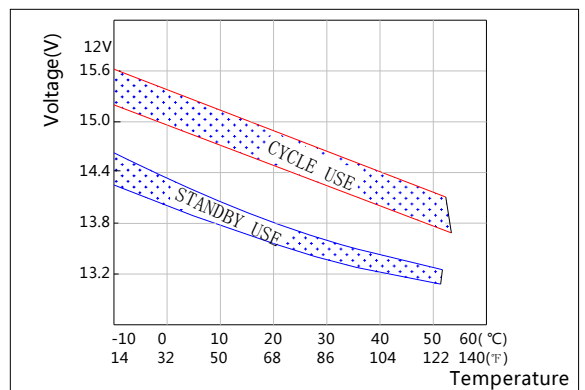
**Self-discharge Characteristics**



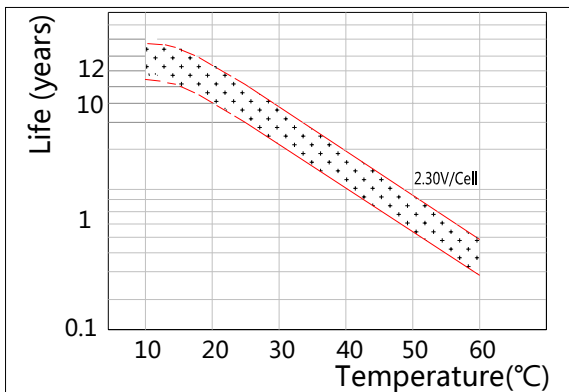
**The Relationship for Open Circuit Voltage and Residual Capacity (25°C)**



**The Relationship for Charging Voltage and Temperature**



**Floating Life on Temperature**



**Cycle Life on D.O.D(25°C)**

