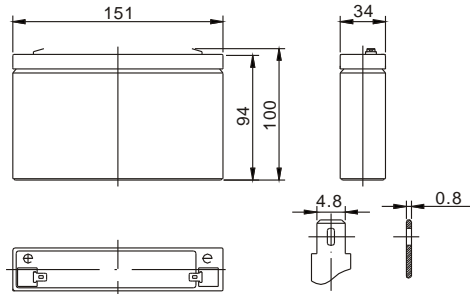


Standard Series FP665 6V6.5Ah

FirstPower®

Dimension



T1
Terminal



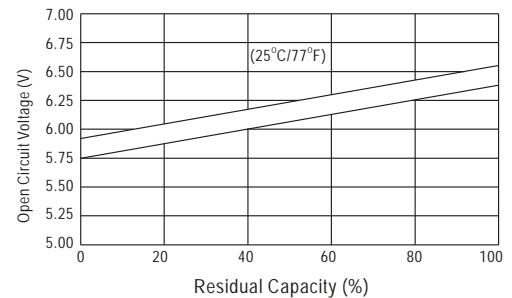
Specification

Nominal Voltage		6 V
Capacity(20HR, 25°C)		6.5Ah
Dimension	Length	151mm (5.94inch)
	Width	34mm (1.34inch)
	Height	94mm (3.70inch)
	Total Height	100mm (3.94inch)
Approx. Weight		1.1kg (2.43lbs)

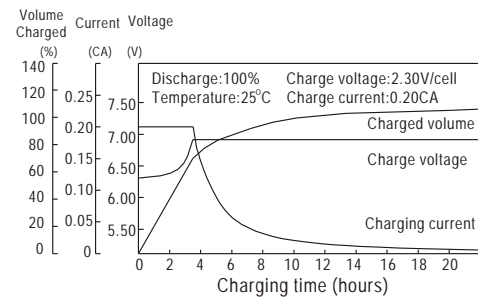
Characteristics

Capacity 20°C (68°F) To 1.70V/Cell	20 hour rate	6.5Ah
	10 hour rate	6.0Ah
	5 hour rate	5.5Ah
	1 hour rate	4.06Ah
	15 min rate	2.98Ah
Internal resistance(Fully charged, 25°C)		Approx. 17mΩ
Capacity affected by temperature (20HR)	40°C	102%
	25°C	100%
	0°C	85%
	-15°C	65%
Self-discharge (25°C)	3 month	Remaining Capacity: 91%
	6 month	Remaining Capacity: 82%
	12 month	Remaining Capacity: 65%
Nominal operating temperature		25°C ±3°C(77°F ±5°F)
Operating temperature range		-15°C~50°C(5°F~122°F)
Float charging voltage(25°C)		6.80 to 6.90V
Cyclic charging voltage(25°C)		7.25 to 7.45V
Maximum charging current		1.95A
Terminal material		Copper
Maximum discharge current		97.5A(5 sec.)

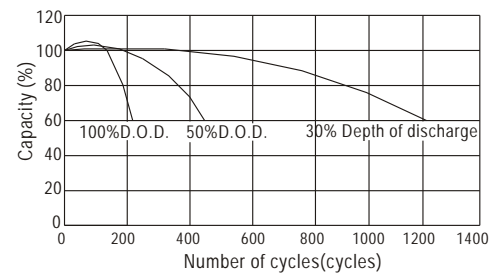
The Relationship for OpenCircuit Voltage and Residual Capacity (25°C)



Charging Characteristics(25°C)



Cycle Life(25°C)



Constant Current Discharge Characteristics(A, 25°C)

F.V/TIME	5min	10min	15min	30min	60min	3h	5h	10h	20h
4.80V	24.7	15.6	12.4	7.15	4.23	1.65	1.12	0.61	0.33
5.10V	23.5	14.8	11.9	6.86	4.06	1.63	1.11	0.60	0.33
5.40V	22.1	13.9	11.3	6.52	3.85	1.59	1.08	0.60	0.33

Constant Power Discharge Characteristics(Watt, 25°C)

5min	10min	15min	30min	60min	3h	5h	10h	20h
138	88.0	70.4	41.0	24.5	9.80	6.70	3.64	1.98
131	83.6	67.6	39.3	23.5	9.65	6.60	3.61	1.96
123	78.6	64.2	37.4	22.3	9.46	6.46	3.61	1.95