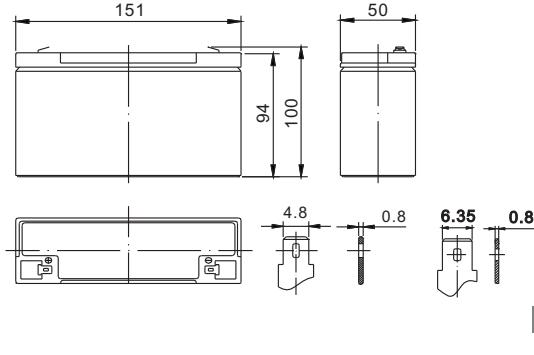


Standard Series FP6100 6V10Ah

FirstPower®

Dimension



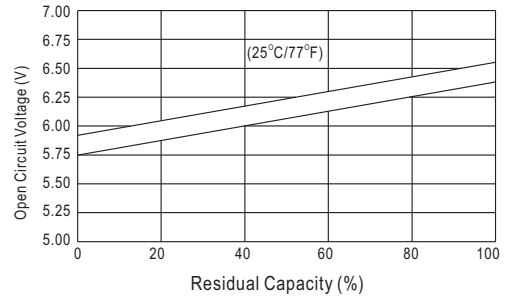
Specification

Nominal Voltage		6 V
Capacity(20HR, 25°C)		10Ah
Dimension	Length	151mm (5.94inch)
	Width	50mm (1.97inch)
	Height	94mm (3.70inch)
	Total Height(T1/T2)	100mm (3.94inch)
Approx. Weight		1.6kg (3.53lbs)

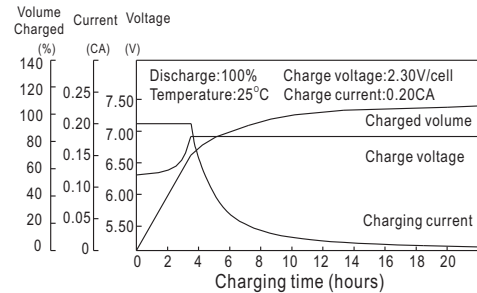
Characteristics

Capacity 20°C (68°F) To 1.70V/Cell	20 hour rate	10Ah
	10 hour rate	9.6Ah
	5 hour rate	8.75Ah
	1 hour rate	6.43Ah
	15 min rate	4.8Ah
Internal resistance(Fully charged, 25°C)		Approx. 12m Ω
Capacity affected by temperature (20HR)	40°C	102%
	25°C	100%
	0°C	85%
	-15°C	65%
Self-discharge (25°C)	3 month	Remaining Capacity: 91%
	6 month	Remaining Capacity: 82%
	12 month	Remaining Capacity: 65%
Nominal operating temperature		25°C ±3°C(77°F ±5°F)
Operating temperature range		-15°C~50°C(5°F~122°F)
Float charging voltage(25°C)		6.80 to 6.90V
Cyclic charging voltage(25°C)		7.25 to 7.45V
Maximum charging current		3A
Terminal material		Copper
Maximum discharge current		150A(5 sec.)

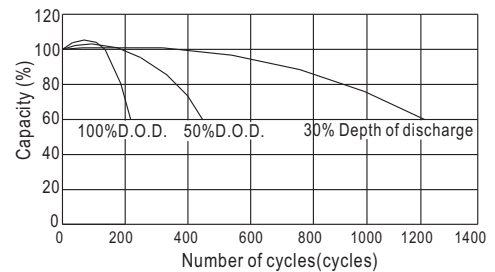
The Relationship for Open Circuit Voltage and Residual Capacity (25°C)



Charging Characteristics(25°C)



Cycle Life(25°C)



Constant Current Discharge Characteristics (A, 25°C)

F.V/TIME	5min	10min	15min	30min	60min	3h	5h	10h	20h
4.80V	40.0	26.0	20.0	11.5	6.70	2.64	1.78	0.96	0.51
5.10V	38.0	24.7	19.2	11.0	6.43	2.60	1.75	0.96	0.50
5.40V	35.7	23.2	18.2	10.5	6.11	2.55	1.72	0.95	0.50

Constant Power Discharge Characteristics (Watt, 25°C)

	5min	10min	15min	30min	60min	3h	5h	10h	20h
223	147	114	65.9	38.8	15.7	10.6	5.79	3.05	
212	139	109	63.3	37.2	15.4	10.4	5.73	3.02	
199	131	104	60.1	35.4	15.1	10.2	5.73	3.00	