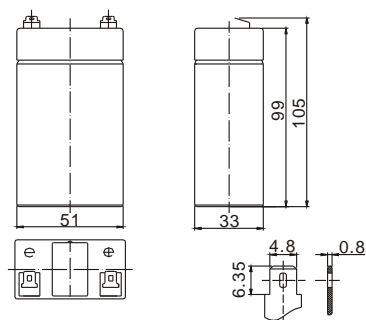


Standard Series FP260 2V6.0Ah

FirstPower®

Dimension



T1
Terminal



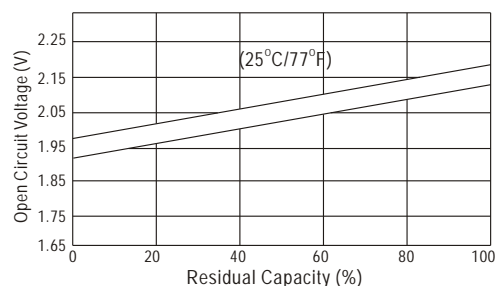
Specification

Nominal Voltage		2 V
Capacity(20HR, 25°C)		6 Ah
Dimension	Length	51mm (2.01inch)
	Width	33mm (1.30inch)
	Height	99mm (3.90inch)
	Total Height	105mm (4.13inch)
Approx. Weight		0.36kg (0.79lbs)

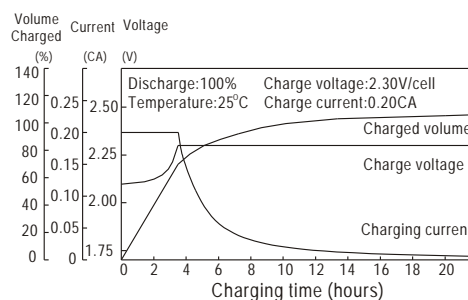
Characteristics

Capacity 20°C (68°F) To 1.70V/Cell	20 hour rate	6Ah
	10 hour rate	5.5Ah
	5 hour rate	4.95Ah
	1 hour rate	3.57Ah
	15 min rate	2.6Ah
Internal resistance(Fully charged, 25°C)		Approx. 7mΩ
Capacity affected by temperature (20HR)	40°C	102%
	25°C	100%
	0°C	85%
	-15°C	65%
Self-discharge (25°C)	3 month	Remaining Capacity: 91%
	6 month	Remaining Capacity: 82%
	12 month	Remaining Capacity: 65%
Nominal operating temperature		25°C ±3°C(77°F ±5°F)
Operating temperature range		-15°C -50°C(5°F -122°F)
Float charging voltage(25°C)		2.27 to 2.30V
Cyclic charging voltage(25°C)		2.42 to 2.48V
Maximum charging current		1.8A
Terminal material		Copper
Maximum discharge current		90A(5 secretary.)

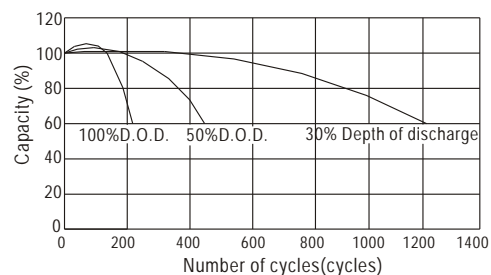
The Relationship for OpenCircuit Voltage and Residual Capacity (25°C)



Charging Characteristics(25°C)



Cycle Life(25°C)



Constant Current Discharge Characteristics(A, 25°C)

F.V/TIME	5min	10min	15min	30min	60min	3h	5h	10h	20h
1.60V	22.2	13.8	10.8	6.48	3.72	1.43	1.00	0.55	0.305
1.70V	21.1	13.1	10.4	6.22	3.57	1.41	0.99	0.55	0.302
1.80V	19.8	12.3	9.85	5.91	3.39	1.38	0.97	0.55	0.300

Constant Power Discharge Characteristics(Watt, 25°C)

5min	10min	15min	30min	60min	3h	5h	10h	20h
41.3	25.9	20.5	12.4	7.18	2.83	2.00	1.11	0.61
39.2	24.6	19.7	11.9	6.89	2.79	1.97	1.10	0.60
36.9	23.2	18.7	11.3	6.55	2.74	1.93	1.10	0.60