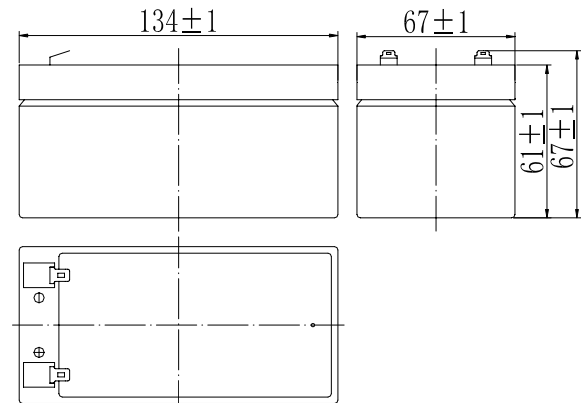


Specifications

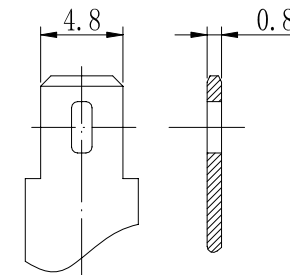
Nominal Voltage		12 V
Capacity (25°C)	20HR(10.5V)	3.4Ah
	10HR(10.5V)	3.1Ah
	1HR(9.60V)	2.15Ah
Dimension	Length	134 ± 1mm (5.28inch)
	Width	67 ± 1mm (2.64inch)
	Height	61 ± 1mm (2.40inch)
	Total Height	67 ± 1mm (2.64inch)
Approx. Weight		1.3kg (2.87lbs) ± 5%
Terminal type		T1
Internal resistance (Fully charged, 25°C)		Approx. 50mΩ
Capacity affected by temperature (20HR)	40°C	102%
	25°C	100%
	0°C	85%
	-15°C	65%
Self-discharge (25°C)	3 month	Remaining Capacity: 91%
	6 month	Remaining Capacity: 82%
	12 month	Remaining Capacity: 65%
Nominal operating temperature		25°C ± 3°C (77°F ± 5°F)
Operating temperature range	Discharge	-15°C ~ 50°C (5°F ~ 122°F)
	Charge	-10°C ~ 50°C (14°F ~ 122°F)
	Storage	-20°C ~ 50°C (-4°F ~ 122°F)
Float charging voltage(25°C)		13.60 to 13.80V Temperature compensation: -18mV/°C
Cyclic charging voltage(25°C)		14.50 to 14.90V Temperature compensation: -30mV/°C
Maximum charging current		1.02A
Terminal material		Copper
Maximum discharge current		51A(5 sec.)
Designed floating life(20°C)		3~5 years

- ◆ Absorbent glass mat technology;
- ◆ Recognized by UL & CE;
- ◆ ABS container.

Dimensions



Terminal



Terminal T1

Constant Current Discharge Characteristics (A, 25°C)

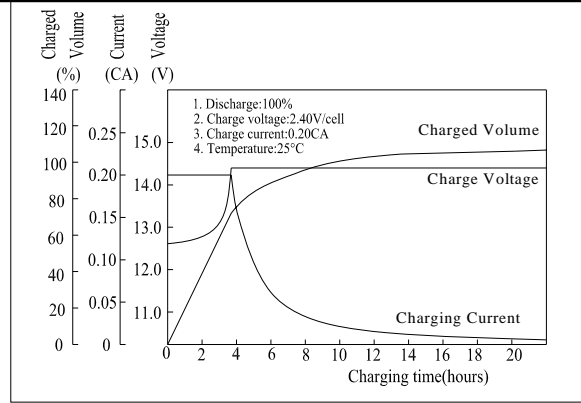
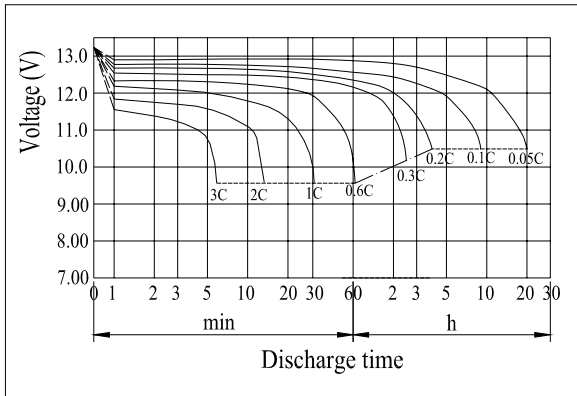
F.V/TIME	5min	10min	15min	30min	60min	2h	3h	4h	5h	10h	20h
9.60V	12.5	7.92	6.27	3.50	2.15	1.17	0.84	0.67	0.57	0.31	0.17
9.90V	12.2	7.68	6.12	3.43	2.11	1.17	0.84	0.67	0.57	0.31	0.17
10.2V	11.7	7.37	5.89	3.32	2.06	1.16	0.83	0.66	0.56	0.31	0.17
10.5V	11.2	7.05	5.69	3.24	2.02	1.14	0.83	0.66	0.56	0.31	0.17
10.8V	10.5	6.65	5.39	3.12	1.96	1.11	0.80	0.64	0.54	0.30	0.16

Constant Power Discharge Characteristics (Watt, 25°C)

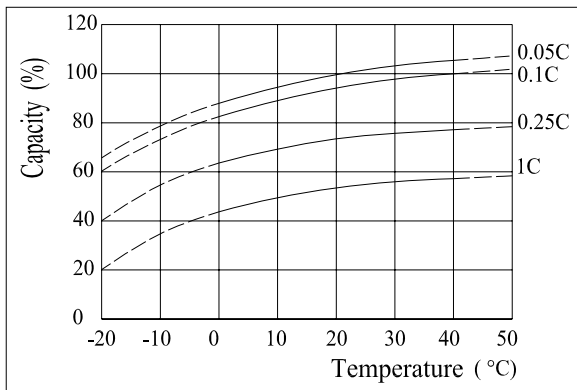
F.V/TIME	5min	10min	15min	30min	60min	2h	3h	4h	5h	10h	20h
9.60V	140	89.3	71.5	40.1	24.8	13.7	10.0	8.02	6.83	3.74	2.01
9.90V	136	86.7	69.8	39.3	24.5	13.6	9.94	7.97	6.79	3.72	2.00
10.2V	130	83.1	67.2	38.1	23.8	13.5	9.87	7.92	6.75	3.70	1.99
10.5V	125	79.5	64.9	37.2	23.4	13.3	9.80	7.86	6.70	3.68	1.98
10.8V	118	75.0	61.5	35.8	22.7	13.0	9.51	7.62	6.50	3.61	1.94

Note: The above characteristics data can be obtained within three charge/discharge cycles.

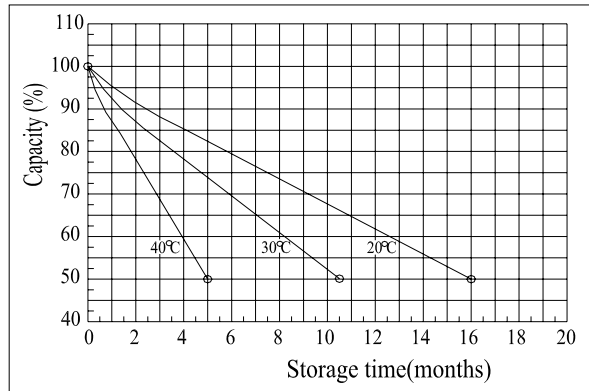
Discharge Characteristics(25°C)



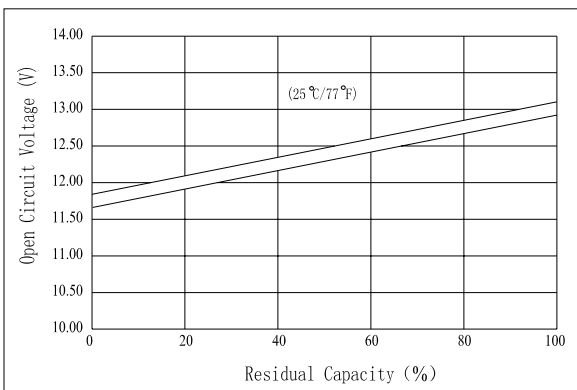
Effect of Temperature on Capacity



Self-discharge Characteristics



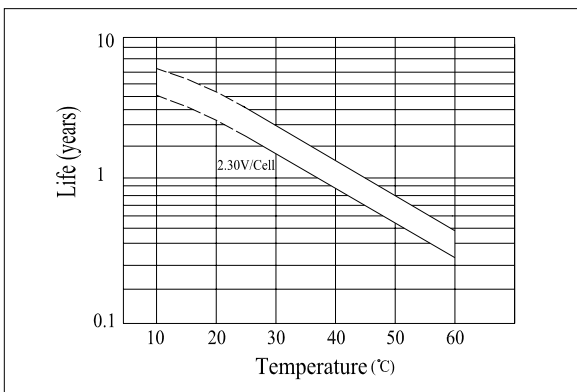
The Relationship for Open Circuit Voltage and Residual Capacity (25°C)



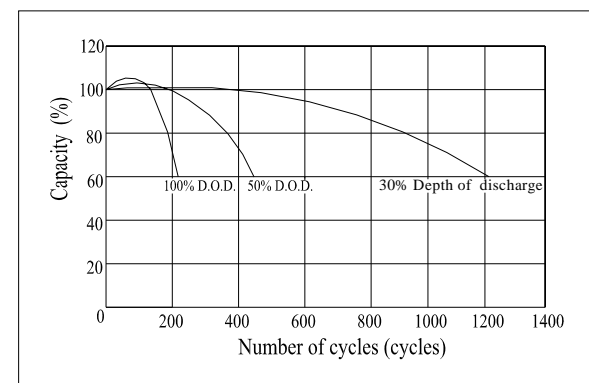
The Relationship for Charging Voltage and Temperature



Floating Life on Temperature



Cycle Life on D.O.D(25°C)



Charging Characteristics(25°C)